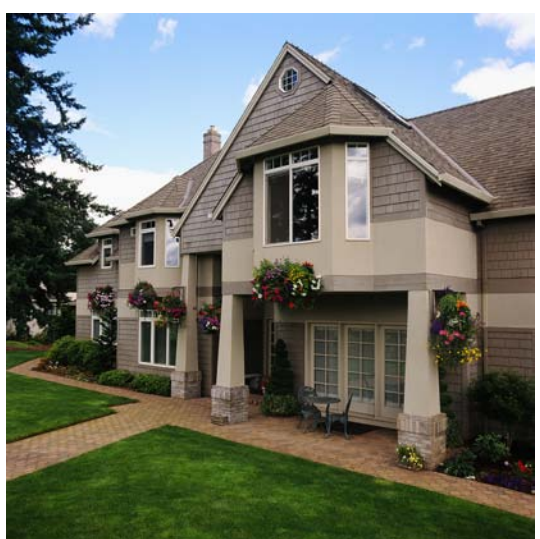


Put Your Windows to Work Saving You Money

The windows of your home can be one of its most attractive features and provide you with scenic views, daylight, ventilation, and solar heating in the winter. However, **the windows of your home can also account for 10% to 25% of your heating and electricity bill.** During the hot summer months, your air conditioner unit must work harder to cool the hot air coming in from your sunny windows and in the winter, your heater must work harder to replace the warm air leaking through. In addition to letting the sun shine throughout your home, put the windows in your home to work by saving money with storm windows.

Storm windows will improve the efficiency of the existing windows in your home by several ways. They can drastically improve the comfort of your home by slowing the heat movement and reducing air leakage throughout your home. They can also help to protect the primary windows of your home from weather damage, such as rain



or snowmelt. Beyond saving energy, storm windows can lower the maintenance costs on your primary windows and reduce the outside noise as well as pollutants from entering your home.



Storm windows are relatively easy to apply onto any single-family or multi-family buildings with single-pane windows. They can be applied on the interior or exterior of your primary window. Storm windows can range from inexpensive plastic sheets or films designed for one heating season to triple-track glass units with low-emissivity coatings. Mid-priced storm windows may use glass, plastic panels, or special plastic sheets that have specific optical qualities. Storm windows made of polycarbonate plastic or laminated glass offer a high degree of resistance to breaking during storms and from intruders.

In comparison to exterior storm windows, interior storm windows are better for several reasons. Interior storm windows are easier to install and remove. In addition, they require less maintenance by not being exposed to the elements. Finally, due to the fact that they seal tightly to the primary window they're more efficient at reducing air infiltration. Interior storm windows are also more suited for apartments and homes with more than one floor.

When installing storm windows, it is important to remember that despite the type of storm window you install, the storm window frame must be hung square with the primary window sealed to the opening. You should also make sure to take into consideration that the storm window should be easy to move for cleaning and ventilation. When installing exterior storm windows, make sure that they have "weep holes" at the bottom of the frame to allow any moisture that collects between the primary window and the storm window to drain out. This is vital to prevent your primary window frame from rotting and to keep your storm window operating at its most efficient.

LINKS for more information:

Toolbase Services, a technical information resource for the home building industry:
<http://www.toolbase.org>

Do it Yourself - The Internet's Largest Home Improvement and Home Repair Library
<http://www.doityourself.com>